

CertainTeed
Bufftech[®]
Vinyl Fence Products



CertainTeed 
Quality made certain. Satisfaction guaranteed.[™]

High-quality vinyl fence systems from the #1 name in *building products*

For more than 100 years, homeowners and building professionals alike have relied on CertainTeed as a trusted source of innovative, high-quality products. That long-standing tradition continues today with the Bufftech® line of vinyl fence. Bufftech fence systems combine long-lasting beauty, quality and durability with style and performance innovations that are only available from CertainTeed.

THE FIRST NAME IN QUALITY, STYLE AND PERFORMANCE

CertainTeed Corporation is one of the nation's largest and most respected manufacturers of building materials. We offer a complete line of high-quality exterior building products including roofing, siding, windows, trim, foundations and pipe — plus our comprehensive line of low-maintenance fence, railing and decking. Our products are consistently ranked #1 in brand use by remodelers, builders, architects and consumers.

When you purchase a CertainTeed Bufftech fence, you're buying more than just a beautiful product. You're getting the resources of a market leader that continues to set new standards for innovation, quality and performance since its founding more than a century ago.



CERTAINTEED SETS THE STANDARD

Customers look to CertainTeed for the latest innovations in style and performance. From our proprietary texturing process to our unique shades and stain blends, CertainTeed is the undisputed market leader in color and texture. Taking advantage of our extensive technological resources, CertainTeed continues to develop products offering exceptional performance and industry-first designs. Virtually maintenance-free, CertainTeed vinyl products deliver the ultimate in good looks and easy care, and never need staining or painting. We back it all up with the best warranty protection available anywhere.

UNPARALLELED PROFESSIONAL SUPPORT

CertainTeed helps you build your business with an industry-leading program of professional support—from product education and installation training to a wide array of sales tools and marketing resources. Programs such as Show Me the Money and Building Solutions™ offer builders and remodelers education, training, support, incentives and rewards for purchases of CertainTeed products.



2 ABOUT CERTAINTEED

4 THE BUFFTECH ADVANTAGE

6 TRADITIONAL FENCE
Danbury Select Cedar
Danbury Smooth
Cape Cod
Rothbury
Yorkshire

8 CLASSIC FENCE
Manchester
Classic Impressions Posts
Canterbury

10 CONTEMPORARY FENCE
Baron Select Cedar
Baron Smooth
Monarch
Princeton
Countess
Victorian

12 SEMI-PRIVATE FENCE
Imperial Select Cedar
Imperial Smooth
Columbia
Millbrook

14 PRIVACY FENCE
Chesterfield CertaGrain
Chesterfield CertaStucco
Galveston CertaGrain
Galveston Smooth
Chesterfield Smooth
Chesterfield with Lattice Accent
Chesterfield with Victorian Accent
Chesterfield with Huntington Accent
Chesterfield with Westminster Accent
Chesterfield Swoop and S Curve
Chesterfield Smooth Gates
New Lexington
New Lexington with Lattice Accent
New Lexington Swoop and S Curve

22 POST & RAIL
2-Rail CertaGrain
3-Rail CertaGrain
4-Rail CertaGrain
2-Rail Smooth
3-Rail Smooth
4-Rail Smooth
Crossbuck

24 GATES
Coordinating Gates
Gate Hardware

26 ACCESSORIES
Post Caps
Solar Lights

27 LAWN AND GARDEN
Aristocrat II
Vineyard Pergola
Beaumont II

28 SPECIFICATIONS

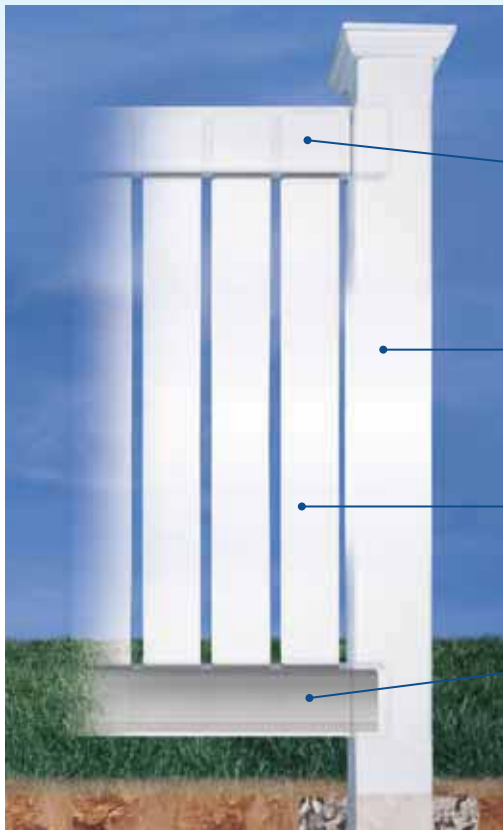
Chesterfield CertaGrain® in Sierra Blend
Front cover photo:
Chesterfield CertaGrain® in Honey Blend

The Bufftech® advantage

THE LEADER IN INNOVATION

Bufftech leads the vinyl fence industry with the widest array of innovative styles, colors and textures. Our CertaGrain® and Select Cedar textures deliver the most authentic woodgrain available today, replicating both the look and feel of true wood craftsmanship. Bufftech's CertaStucco™ textured fence provides a cutting-edge alternative to traditional stucco walls in a beautiful low-maintenance design.

Bufftech offers a choice of 12 designer fence colors, including 7 multi-chromatic blends that capture the essence of stained wood. The Bufftech color palette coordinates beautifully with CertainTeed's industry-leading spectrum of siding and trim colors, giving homeowners the ability to choose a fence that will complement their home's exterior.



*What sets Bufftech apart from other vinyl fence products?
The difference is in the details.*

ROUTED RAILS

- Fence section can be racked to follow the slope of the terrain
- Precision routed for a clean, professional finish
- Ensures a safe, secure picket attachment with no unsightly glue or screws

ROUTED FENCE POST

- Superior aesthetics to unsightly brackets and screws
- A more secure connection that allows for thermal expansion season after season

HEAVYWEIGHT PICKETS

- Provide superior impact strength and resist the warping and oil canning found in flat panel fence
- Offering includes both profile and tongue & groove designs

REINFORCED BOTTOM RAIL*

- Eliminates sagging and bowing, producing a stronger fence
- Hour-glass design grips the end of pickets to add stiffness

*Offered with privacy, semi-private, classic and contemporary fence and Danbury/Rothbury traditional picket styles



Performance Features	Bufftech Vinyl
Lifetime limited transferable warranty	✓
Parts and labor warranty	✓
Never needs painting or staining	✓
Won't chip, peel, crack or splinter	✓
Won't rot or support mold growth	✓
Impervious to termites/wood-boring insects	✓
No harmful chemicals	✓
Concealed fasteners	✓
Heavyweight pickets	✓
Steel reinforced rails	✓
Routed rails and posts	✓
Self-extinguishing	✓
Easy to assemble	✓
High-quality raw materials	✓
Lead free	✓
Building code compliant	✓
Meets ASTM standards	✓
Wide choice of colors	✓
Dark color fade protection	✓
Woodgrain and stucco textures	✓
Made in the U.S.A.	✓

Look for these icons throughout the brochure on products that meet special performance requirements.



COLORLAST™ DARK COLOR FADE PROTECTION

Our acrylic formulation provides superior protection from the harsh rays of the sun, resulting in richer color that retains its vibrant hue for years to come. ColorLast is offered in Natural Clay, Autumn Brown, Arbor Blend, Arctic Blend, Brazilian Blend, Frontier Blend, Honey Blend, Sierra Blend, and Weathered Blend.



WINDZONE™ PERFORMANCE

Miami-Dade County-approved NOA #06-1019.01* for exceptional performance in high wind conditions.
*Expires 3-13-2013



MEETS POOL CODE

Styles that meet most local building codes for use around pools (applies to 4', 5' and 6' heights only).

THE BEST PROTECTION IN THE BUSINESS

CertainTeed stands behind the Bufftech line with an exceptional lifetime limited transferable warranty. We take it one step further by adding SureStart™ protection – an exclusive CertainTeed benefit that covers warranted repair and replacement costs, including labor, for five years after installation. CertainTeed also guarantees the performance of Bufftech's darker colors and stain blends with our proprietary ColorLast™ fade protection, a state-of-the-art acrylic formulation that provides superior protection from the harsh rays of the sun.

SUPERIOR DESIGN AND PERFORMANCE

Bufftech fence is designed for exceptional performance. Premium features such as high-quality raw materials, steel reinforced rails, heavyweight pickets, routed rails and fence posts, and concealed fasteners ensure that Bufftech will outlast and outperform other vinyl fences. Our matching vinyl gates are unmatched in the industry, with a heavy-duty aluminum frame and the highest quality hardware on the market.

Backed by CertainTeed's exclusive WindZone™ performance, Bufftech fence is engineered for use in high wind and hurricane conditions, as approved by Miami-Dade County NOA #06-1019.01*. Recognized as the most stringent standards in the country, Miami-Dade test protocols include dynamic wind load testing up to 110 mph. The Bufftech line also meets the strict requirements of the ASTM and includes styles that comply with local codes for swimming pool applications.

*Expires 3-13-2013



Colors throughout this brochure are simulated. Consult product samples before making final selection.

A timeless look that's always *in style*



Danbury Select Cedar in Sierra Blend shown
with Chesterfield CertaGrain™ in Sierra Blend

TRADITIONAL



DANBURY SELECT CEDAR STRAIGHT/CONCAVE

Thru-picket "good neighbor" design is equally attractive on both sides. Thru-picket styles are 8' wide. Reinforced bottom rail.

Heights: 4'
Picket Style: 3" Pointed Picket
Picket Spacing: 2-15/16"



**DANBURY CONCAVE/
DANBURY STRAIGHT**

Thru-picket "good neighbor" design is equally attractive on both sides. Thru-picket styles are 8' wide. Reinforced bottom rail.

Heights: 4'
Picket Style: 3" Pointed Picket
Picket Spacing: 2-15/16"

White

Almond

Natural Clay



CAPE COD CONCAVE/CAPE COD

Heights: 3', 4' & 5'
Picket Style: 3" Pointed Picket
Picket Spacing: 2-7/16"

White



ROTHBURY CONCAVE/ROTHBURY

Thru-picket "good neighbor" design is equally attractive on both sides. Thru-picket styles are 8' wide. Reinforced bottom rail.

Heights: 4'
Picket Style: 3" Dog Ear Picket
Picket Spacing: 2-15/16"

White

Almond



YORKSHIRE/YORKSHIRE CONCAVE

Heights: 3' & 4'
Picket Style: 3" Dog Ear Picket
Picket Spacing: 2-7/16"

White



Sophisticated styling in an *elegant design*



White

MANCHESTER WITH CLASSIC IMPRESSIONS™ POSTS (RECESSED)

*Thru-picket "good neighbor" design is equally attractive on both sides.
Thru-picket styles are 8' wide. Steel reinforced bottom rail.*

Heights: 3' & 4' posts available
(available specifically to complement Manchester
fence for flat and concave styles)



White

MANCHESTER WITH CLASSIC IMPRESSIONS™ POSTS (FLUTED)

Thru-picket "good neighbor" design is equally attractive on both sides. Thru-picket styles are 8' wide. Steel reinforced bottom rail.

Heights: 3' & 4' posts available (available specifically to complement Manchester fence for flat and concave styles)



White

CANTERBURY/CANTERBURY SWOOP

Heights: 3' & 4'
 Picket Style: 1-1/2" Square
 Picket Spacing: 1-9/16"



White

Almond



MANCHESTER/MANCHESTER CONCAVE

Thru-picket "good neighbor" design is equally attractive on both sides. Thru-picket styles are 8' wide. Steel reinforced bottom rail.

Heights: 3' & 4'
 Picket Style: 1-1/2" Square
 Picket Spacing: 1-9/16"

Easy care with modern-day *flair*



BARON SELECT CEDAR/
BARON SELECT CEDAR WITH MIDRAIL

Heights: 4', 5' & 6' (5' & 6' include midrail)

Picket Style: 7/8" x 3"

Picket Spacing: 2-15/16"



White

Almond



**PRINCETON/
PRINCETON WITH MIDRAIL**

Rackable pickets maintain a clean, upright appearance on sloping terrain. Bottom rail reinforced with steel for added strength and durability.

Heights: 3', 4', 5' & 6' (5' & 6' include midrail)
Picket Style: 7/8" x 1-1/2"
Picket Spacing: 1-3/4"

White

Almond



BARON/BARON WITH MIDRAIL

Heights: 3', 4', 5' & 6' (5' & 6' include midrail)
Picket Style: 7/8" x 3"
Picket Spacing: 2-15/16"



White

Almond



COUNTESS/COUNTESS WITH MIDRAIL

Heights: 3', 4', 5' & 6' (5' & 6' include midrail)
Picket Style: 7/8" x 1-1/2", 7/8" x 3"
Picket Spacing: 2-5/16"



White

Almond



White

Almond



White

Almond



MONARCH/MONARCH WITH MIDRAIL

Heights: 3', 4', 5' & 6' (5' & 6' include midrail)
Picket Style: 7/8" x 1-1/2", 7/8" x 3"
Picket Spacing: 3"

VICTORIAN/VICTORIAN WITH MIDRAIL

Heights: 3', 4', 5' & 6' (5' & 6' include midrail)
Picket Style: 7/8" x 1-1/2"
Picket Spacing: 3-5/8"

A smart option that
complements any setting

White

Almond

Natural Clay

Sierra Blend



**IMPERIAL SELECT CEDAR/
IMPERIAL SELECT CEDAR WITH MIDRAIL**

Thru-picket "good neighbor" design is equally attractive on both sides. Bottom rail reinforced with steel for added strength and durability.

Heights: 4', 5' & 6' (5' & 6' include midrail)
Picket Style: 7/8" x 3"
Picket Spacing: 7/16"

Imperial Select Cedar in Sierra Blend



Imperial with Midrail in Almond

- White
- Almond
- Natural Clay 



**IMPERIAL WITH MIDRAIL/
IMPERIAL (SMOOTH FINISH)**

Heights: 3', 4', 5' & 6' (5' & 6' include midrail)
Picket Style: 7/8" x 3"
Picket Spacing: 7/16"

6' height only features WindZone™ performance

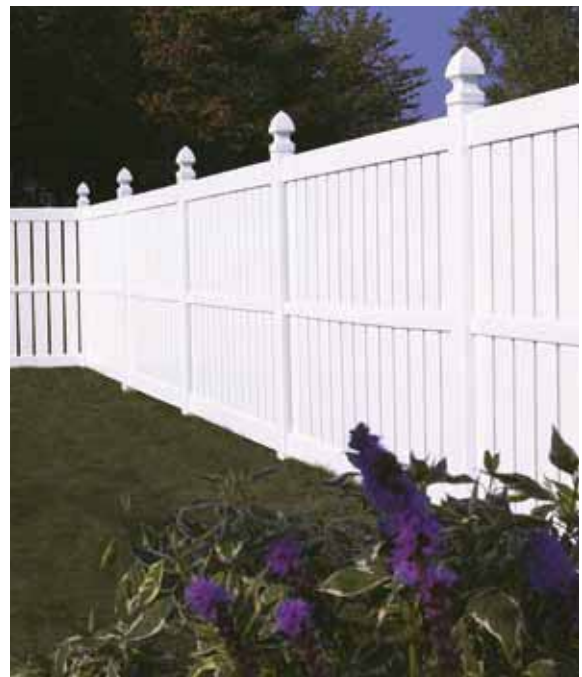


White



COLUMBIA/COLUMBIA WITH LATTICE

Heights: 5' & 6'
Picket Style: 7/8" x 6" Ribbed
Picket Spacing: 4-9/16"



- White
- Almond

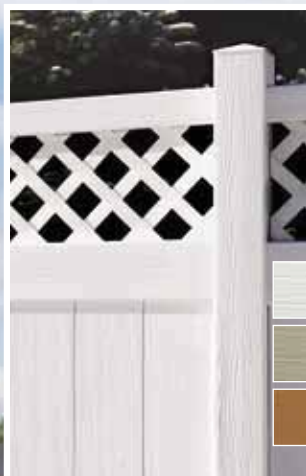


MILLBROOK

Heights: 5' & 6'
Picket Style: 7/8" x 6" Ribbed
Picket Spacing: 13/16"

Chesterfield

The *look and feel* of real wood



CHESTERFIELD WITH CERTAGRAIN® TEXTURE WITH LATTICE ACCENT (INSET)

Heights: 4' 10" plus 1' 3" Accent
Picket Style: 7/8" x 7" Tongue & Groove

- White
- Natural Clay 
- Autumn Brown 



CHESTERFIELD WITH CERTAGRAIN® TEXTURE

Bufftech's authentic woodgrain texture and "multi-chromatic" color blends, recreate the natural beauty of stained wood in an easy-to-maintain vinyl design. Bottom rail reinforced with steel for added strength and durability.

Heights: 4', 5' & 6'
Picket Style: 7/8" x 7" Tongue & Groove

- White
- Almond 
- Natural Clay 
- Autumn Brown 
- Arbor Blend 
- Arctic Blend 
- Brazilian Blend  
- Frontier Blend  
- Honey Blend  
- Sierra Blend 
- Weathered Blend 

Chesterfield CertaGrain® Brazilian Blend

The beauty of wood with the benefits of vinyl

Bufftech vinyl fence is a beautiful, long-lasting alternative to wood fence. Wood fences require painting or staining every few years to maintain the fence's appearance and to protect the wood from weathering. Bufftech fence won't warp, rot, splinter, peel or blister like wood, and it never needs sanding, staining or painting. Years from now, a Bufftech fence will look as beautiful as it did on the day it was installed.

Bufftech fence offers a realistic woodgrain texture and rich, authentic shades that replicate the look of natural wood without the maintenance.



Traditional wood fence vs. Chesterfield CertaGrain® vinyl fence in Arctic Blend



Chesterfield CertaGrain® in Sierra Blend

Traditional **STUCCO** styling in an economical, *easy-care* design



*Chesterfield CertaStucco™ in Mission Ivory
Inset: Chesterfield CertaStucco™ in Almond*

Mission Ivory

Almond



CHESTERFIELD WITH CERTASTUCCO™ TEXTURE

Bufftech's innovative alternative to traditional stucco walls, CertaStucco won't crumble, peel, chip or crack due to settlement, or stain like traditional stucco. It eliminates the time-consuming, costly task of digging a foundation and finishing the wall.

Heights: 4', 5' & 6'
Picket Style: 7/8" x 7" Tongue & Groove

An array of beautiful, long-lasting colors

*CertaGrain® fence delivers a deep woodgrain texture in a staggering array of colors,
including 4 solid colors and 7 stain blends.*





The perfect choice
for complete privacy

GALVESTON WITH CERTAGRAIN® TEXTURE

Available in 7' and 8' heights — Galveston, our tallest privacy fence — offers the ultimate in complete privacy and is suitable for commercial applications. All three rails are reinforced with steel.

Heights: 7' & 8'
Picket Style: 7/8" x 7" Tongue & Groove

-  Natural Clay
-  Arbor Blend
-  Arctic Blend
-  Sierra Blend
-  Weathered Blend

NEW COLOR
NEW COLOR
NEW COLOR
NEW COLOR

Galveston CertaGrain® in Sierra Blend

**GALVESTON SMOOTH FINISH/
GALVESTON LATTICE (INSET) &
GALVESTON VICTORIAN (NOT SHOWN)**

All three rails are reinforced with steel.

Heights: 7' & 8', 6' 8" plus 1' 4" Accent
Picket Style: 7/8" x 7" Tongue & Groove

-  White
-  Almond



NEW COLOR

Galveston in Almond

Chesterfield accents for unique style

Chesterfield in Almond

White

Almond

Natural Clay*



CHESTERFIELD SMOOTH FINISH

Bottom rail reinforced with steel for added strength and durability.

Heights: 4', 5' & 6'
Picket Style: 7/8" x 7" Tongue & Groove
*4' not available in Natural Clay



White



Almond



LATTICE ACCENT

Heights: 4' 8" plus 1' 4" Accent &
3' 8" plus 1' 4" Accent
Picket Style: 7/8" x 7" Tongue & Groove



White



Almond



HUNTINGTON ACCENT

Heights: 4' 8" plus 1' 4" Accent
Picket Styles: 7/8" x 7" Tongue & Groove
and 1-1/2" Square



White



Almond



VICTORIAN ACCENT

Heights: 4' 8" plus 1' 4" Accent
Picket Style: 7/8" x 7" Tongue & Groove
and 7/8" x 1-1/2"



White



WESTMINSTER ACCENT

Heights: 4' 8" plus 1' 4" Accent
Picket Style: 7/8" x 7" Tongue & Groove

CHESTERFIELD SWOOP AND S CURVE FENCE (SMOOTH FINISH)

Swoop and S Curve sections are ideal for transitioning from low to high fencing.

Heights: Transitions from 6' to 4'
Available Colors: White & Almond
Picket Style: 7/8" x 7" Tongue & Groove



S Curve design with Gothic Cap



Swoop design with New England Cap

CHESTERFIELD STRAIGHT (NOT SHOWN), CONCAVE AND CONVEX GATES (SMOOTH FINISH)

Combining Victorian elegance with a durable design, our premium gates feature a heavy-duty internal aluminum frame, self-closing hinges and lockable latches.

Straight Gate Heights: 4', 5' & 6'
Available Straight Gate Colors: White, Almond & Natural Clay
Concave and Convex Gate Height: 6'
Concave and Convex Gate Available Color: White



Convex



Concave

Dependable performance for *privacy* applications

NEW LEXINGTON

Heights: 4' & 6'

Picket Style: 5/8" x 11-3/8" Tongue & Groove

White

Almond



THE SMART CHOICE FOR VALUE

New Lexington offers dependable performance at an economical price, with features you'd expect to find on higher-end fence products. New Lexington includes Bufftech's signature "v" groove picket and Classic Curve rail design. The bottom rail is steel reinforced for added strength and durability.



New Lexington with Lattice in Almond

NEW LEXINGTON WITH LATTICE ACCENT

Heights: 4' 11" plus 1' 1" Accent
Picket Style: 5/8" x 11-3/8"
Tongue & Groove

White

Almond



NEW LEXINGTON SWOOP AND S CURVE FENCE

Transition from low to high fence sections with the New Lexington Swoop and S Curve fence. These specially designed fence sections provide an aesthetically appealing way to unify your fence installation.

Heights: Transitions from 6' to 4'
Available Colors: White & Almond
Picket Style: 5/8" x 11-3/8" Tongue & Groove



Swoop design with New England Cap



S Curve design with New England Cap

A winning combination of beauty,
durability and versatility

3-RAIL STYLE WITH CERTAGRAIN® TEXTURE

Rail Size (White): 1-1/2" x 5-1/2" Ribbed

Rail Size (Sierra Blend*): 2" x 6" Ribbed

White

Sierra Blend



3-Rail Post & Rail CertaGrain® in White

SAFE FOR HORSES

Bufftech's post & rail fence provides a safe, reliable enclosure for horses and other livestock. Available with CertaGrain® texture, our post & rail fence offers the authentic look of painted wood fence with the durability, low maintenance and proven performance of Bufftech's premium vinyl design.



2-RAIL STYLE WITH CERTAGRAIN® TEXTURE†
 Rail Size (White): 1-1/2" x 5-1/2" Ribbed
 Rail Size (Sierra Blend*): 2" x 6" Ribbed



4-RAIL STYLE WITH CERTAGRAIN® TEXTURE (NOT PICTURED)

Available Colors: White & Sierra Blend*
 Rail Size (White): 1-1/2" x 5-1/2" Ribbed
 Rail Size (Sierra Blend*): 2" x 6" Ribbed

2-RAIL STYLE†

Rail Size: 1-1/2" x 5-1/2" Ribbed



3-RAIL STYLE

Rail Size: 1-1/2" x 5-1/2" Ribbed, 2" x 6" Ribbed



4-RAIL STYLE

Rail Size: 1-1/2" x 5-1/2" Ribbed, 2" x 6" Ribbed



CROSSBUCK†

Rail Size: 1-1/2" x 5-1/2" Ribbed



*CertaGrain® Post & Rail Fence in Sierra Blend is subject to manufacturer's "Installation Guidelines" in climates where the temperature exceeds 100° Fahrenheit. Consult our product installation instructions at www.certainteed.com for full details.

†2-rail and Crossbuck styles are recommended for decorative purposes only

Heavy-duty aluminum frame gates

MATCHING GATES



Chesterfield CertaGrain® in Arctic Blend
Inset: Chesterfield CertaGrain® in Sierra Blend

COORDINATING GATES

Bufftech offers a wide selection of gates designed to match all of our fence styles, in a choice of heights and widths. Beautiful and durable, Bufftech gates offer easy installation and great performance. Choose from unassembled gate kits or pre-assembled gates that ship ready to install.



EXPANDED PRIVACY GATE WIDTH OFFERING

Bufftech's line of pre-assembled privacy gates has been expanded to handle a wider range of gate openings.

	Assembled Gate Sizes
Chesterfield	36-1/2", 50-1/2", 64-3/4"*
New Lexington	42-1/2", 50-1/2", 65-1/4"

* does not include concave, convex or Galveston gates

BUILT TO LAST

- Heavy-duty internal aluminum frame
- Stainless steel fasteners prevent corrosion
- Aluminum post insert adds strength and simplifies installation



STAINLESS STEEL POST CAPS

The aluminum post cap with a textured decorative finish can be combined with our New England cap and coordinating with gate hardware.**

Offered in 4" x 4" and 5" x 5" sizes.



Bronze Pebble



Black Pebble

STAINLESS STEEL GATE HARDWARE

Give your gate the old-world look of wrought iron with our rugged, rust-free stainless steel gate hardware. The hardware includes hinge, strike and latch and is available in two decorative finishes: Black Pebble and Bronze Pebble.



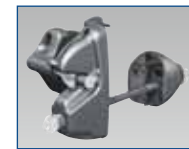
Strike and Latch in Bronze Pebble finish



Hinge in Black Pebble finish

HIGH PERFORMANCE NYLON GATE HARDWARE KITS

Versatile and virtually maintenance free, our premium nylon gate hardware offers key lockable latches, self-closing hinges and contoured gate handles. Available in Black.



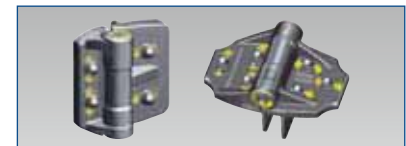
Lokk•Latch® Deluxe



Lokk•Latch® with External Access Kit



Gate•Handle™



Tru•Close® Adjustable, Self-Closing Gate Hinges

**Decorative cap and New England cap sold separately



Lokk•Latch® Key-Lockable Gate Latch, Tru•Close® Self-Closing Gate Hinges and Gate•Handle™ are registered trademarks of D&D Technologies.

Distinctive details for the perfect *finishing touch*



DECORATIVE POST CAPS

Bufftech's decorative post caps feature a metallic and powder coat finish.



Antique Brown Antique Copper Antique Gray Antique Gold Patina

SOLAR POST CAPS AND LIGHTING

Eco-friendly LED lights provide the ultimate in solar-powered accent lighting.

SOLAR POST CAPS



Antique Brown Antique Copper Antique Gray Antique Gold Patina



White* Black* Copper* Stainless*

SOLAR WEDGE LIGHTS



White Black Copper Stainless

PVC POST CAPS

Bufftech's standard PVC post caps come in a variety of styles.



Ball Gothic External Flat New England Internal Flat

*Fits both 4" x 4" and 5" x 5" post sizes. Adapter included.

The perfect addition to any outdoor setting

VINYL ARBORS

Complement your Bufftech fence with an easy-care vinyl arbor. Choose from three elegant styles that add a personal touch to any home or garden. Our vinyl arbors combine classic beauty with low-maintenance durability.

ARISTOCRAT II

Outside Dimensions: 91"h x 72"w x 31"d
Inside Dimensions: 78-1/2"h x 58"w x 31"d

Aristocrat II arbor shown with Danbury Concave fence (see page 7).

White



BEAUMONT II

Outside Dimensions: 96"h x 57"w x 32"d
Inside Dimensions: 90"h x 49"w x 32"d

VINEYARD PERGOLA

Outside Dimensions: 93"h x 89"w x 54"d
Inside Dimensions: 84"h x 48"w x 54"d

White



White



Product Specifications

	Style	Picket Size	Picket Spacing	Section Width Nominal	Rails	Steel Reinforcement Rail ¹	Height	Color
TRADITIONAL	12 Picket							
	Cape Cod (Pointed Cap)	7/8" x 3"	2-7/16"	72"	1-3/4" x 3-1/2" x 72"	None	3',4',5'	White
	Yorkshire (Dog Ear Cap)	7/8" x 3"	2-7/16"	72"	1-3/4" x 3-1/2" x 72"	None	3',4'	White
	15 Picket Thru-Rail							
	Danbury (Pointed Cap)	7/8" x 3"	2-15/16"	96"	1-3/4" x 3-1/2" x 96"	Bottom	4'	White, Almond, Natural Clay
	Danbury Select Cedar (Pointed Cap)	7/8" x 3"	2-15/16"	96"	1-3/4" x 3-1/2" x 96"	Bottom	4'	White, Almond, Natural Clay, Arbor Blend, Arctic Blend, Sierra Blend, Weathered Blend
Rothbury (Dog Ear Cap)	7/8" x 3"	2-15/16"	96"	1-3/4" x 3-1/2" x 96"	Bottom	4'	White, Almond	
CLASSIC	Canterbury	1-1/2" x 1-1/2"	1-9/16"/4-5/8"	96"	2" x 6" x 94" (Ribbed Bottom) 2" x 3-1/2" x 94" (Mid/Top)	Bottom	3',4'	White
	Manchester	1-1/2" x 1-1/2"	1-9/16"	96"	2" x 6" x 94" (Ribbed Bottom) 2" x 3-1/2" x 94" (Top)	Bottom	3',4'	White, Almond
CONTEMPORARY	Baron	7/8" x 3"	2-15/16"	96"	1-3/4" x 3-1/2" x 96"	Bottom	3',4',5',6'	White, Almond
	Baron Select Cedar	7/8" x 3"	2-15/16"	96"	1-3/4" x 3-1/2" x 96"	Bottom	4',5',6'	White, Almond
	Countess	7/8" x 1-1/2" 7/8" x 3"	2-5/16"	96"	1-3/4" x 3-1/2" x 96"	Bottom	3',4',5',6'	White, Almond
	Monarch	7/8" x 1-1/2" 7/8" x 3"	3"	96"	1-3/4" x 3-1/2" x 96"	Bottom	3',4',5',6'	White, Almond
	Princeton	7/8" x 1-1/2"	1-3/4"	96"	1-3/4" x 3-1/2" x 96"	Bottom	3',4',5',6'	White, Almond
	Victorian	7/8" x 1-1/2"	3-5/8"	96"	1-3/4" x 3-1/2" x 96"	Bottom	3',4',5',6'	White, Almond
SEMI-PRIVATE	Columbia ²	7/8" x 6" Ribbed	4-9/16"	96"	3-1/2" x 3-1/2" x 94"	Bottom (Aluminum)	5',6'	White
	Imperial	7/8" x 3"	7/16"	96"	1-3/4" x 3-1/2" x 96"	Bottom	3',4',5',6'	White, Almond, Natural Clay
	Imperial Select Cedar	7/8" x 3"	7/16"	96"	1-3/4" x 3-1/2" x 96"	Bottom	4',5',6'	White, Almond, Natural Clay, Sierra Blend
	Millbrook	7/8" x 6" Ribbed	13/16"	96"	2" x 6" x 94" (Top/Bottom) 1-3/4" x 3-1/2" x 94" (Midrail)	Bottom	5',6'	White, Almond

PRIVACY	Style	Picket Size	Picket Spacing	Section Width Nominal	Rails	Steel Reinforcement Rail*	Height	Color
	Chesterfield Smooth ²	7/8" x 7" Tongue & Groove	N/A	96"	2" x 6" Deco x 94" (Ribbed)	Bottom	4',5',6'	White, Almond, Natural Clay ⁴
	Chesterfield CertaGrain ³	7/8" x 7" Tongue & Groove	N/A	96"	2" x 6" x 94" (Channeled)	Bottom	4',5',6'	White, Almond, Natural Clay, Autumn Brown, Arbor Blend, Arctic Blend, Brazilian Blend, Honey Blend, Frontier Blend, Sierra Blend, Weathered Blend
	Chesterfield CertaStucco ³	7/8" x 7" Tongue & Groove	N/A	96"	2" x 6" x 94" (Channeled)	Bottom	4',5',6'	Mission Ivory, Almond
	Galveston Smooth ²	7/8" x 7" Tongue & Groove	N/A	96"	2" x 6" Deco x 94" (Ribbed) (Top/Bottom) 2" x 6" x 94" (Ribbed - Midrail)	Top, Middle, Bottom	7',8'	White, Almond
	Galveston CertaGrain ³	7/8" x 7" Tongue & Groove	N/A	96"	2" x 6" Channeled x 94" (Ribbed) (Top/Bottom) 2" x 6" x 94" (Ribbed - Midrail)	Top, Middle, Bottom	7',8'	Natural Clay, Arbor Blend, Arctic Blend, Sierra Blend, Weathered Blend
	New Lexington ²	5/8" x 11-3/8" Tongue & Groove	N/A	96"	1-1/2" x 5-1/2" Deco x 94" (Ribbed)	Bottom	4',6'	White, Almond

POST & RAIL	Style	Posts	Rails	Gates	Color
	Post & Rail Smooth	5" x 5" on 8' Centers	1-1/2" x 5-1/2" Ribbed or 2" x 6" Ribbed	2-Rail - 6' wide (12' Double Drive) 3- and 4-Rail - 8' wide (16' Double Drive)	White, Almond
	Post & Rail Textured	5" x 5" on 8' Centers	1-1/2" x 5-1/2" Ribbed or 2" x 6" Ribbed	2-Rail - 6' wide (12' Double Drive) 3- and 4-Rail - 8' wide (16' Double Drive)	White, Sierra Blend
	Crossbuck	5" x 5" on 8' Centers	1-1/2" x 5-1/2" Ribbed Crossrails, 1-1/2" x 5-1/2" Ribbed	Available in 8' Width Only, 16' Double Drive	White

¹ Standard for bottom rails where noted. Optional for top rails. Aluminum channel available and recommended for high corrosion areas.

² Lattice and Victorian accents available (Lattice only for Columbia & New Lexington).

³ Textured finish is a 2" x 6" channeled rail.

⁴ Not available in Natural Clay.

Note: Chesterfield and Imperial styles in Clay, Autumn Brown, Arbor Blend, Arctic Blend, Brazilian Blend, Frontier Blend, Honey Blend, Sierra Blend and Weathered Blend have steel reinforcement in top and bottom rails.

Intermediate Rails: All 5', 6', 7' and 8' heights have an additional midrail with the same dimensions as top/bottom rails (except Chesterfield, New Lexington and all Traditional fences). Other exceptions are noted on specifications chart.

Posts: All 3' & 4' high fences available with true 4" x 4" posts except Chesterfield, Manchester and Canterbury (5" x 5" posts). Post & Rail and all 5', 6', 7' and 8' fences available with 5" x 5" posts.

Caps: Choice of External Flat, Internal Flat, Gothic, New England or Ball. (Please refer to page 26 for complete cap offering.)

Gates: Choice of factory pre-assembled gates or customizable gate kits for residential style fences. (Please refer to product catalog for complete gate offering.)



Chesterfield CertaGrain® in Frontier Blend

buildingresponsibly™

ASK ABOUT OUR OTHER CERTAINTEED PRODUCTS AND SYSTEMS:

EXTERIOR: ROOFING • SIDING • WINDOWS • FENCE • RAILING • TRIM • DECKING • FOUNDATIONS • PIPE
INTERIOR: INSULATION • GYPSUM • CEILINGS

CertainTeed Corporation
P.O. Box 860
Valley Forge, PA 19482

Professional: 800-233-8990
Consumer: 800-782-8777
www.certainteed.com

CertainTeed